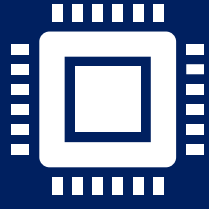
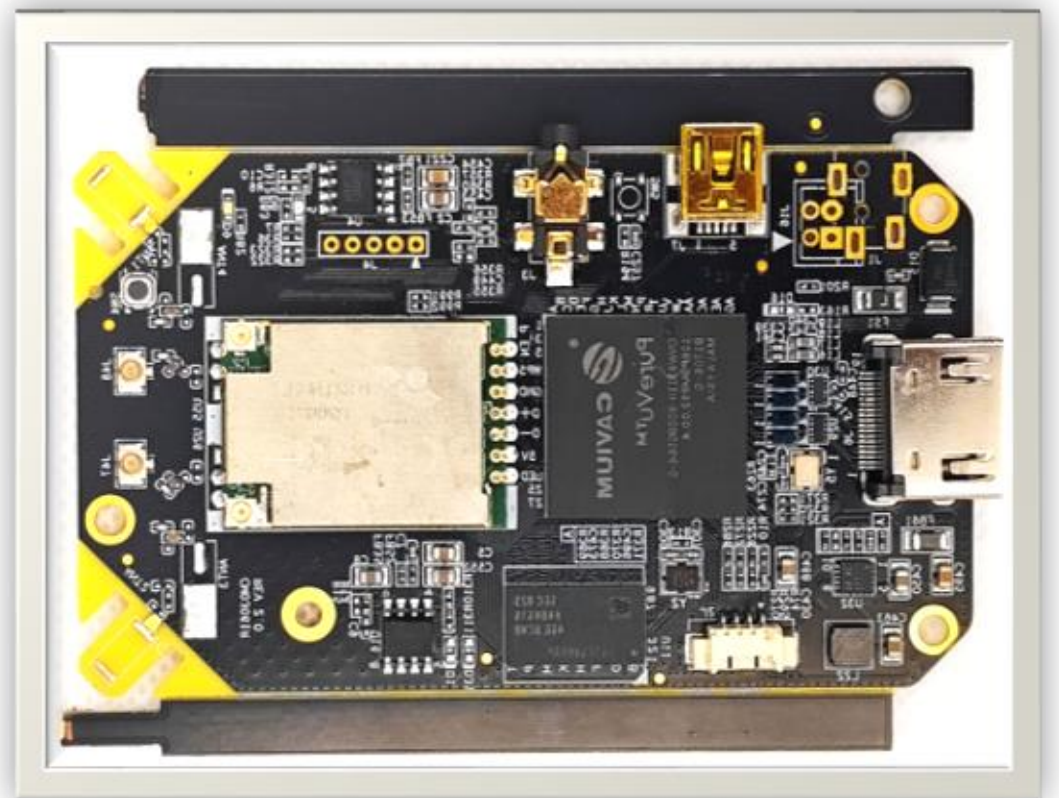
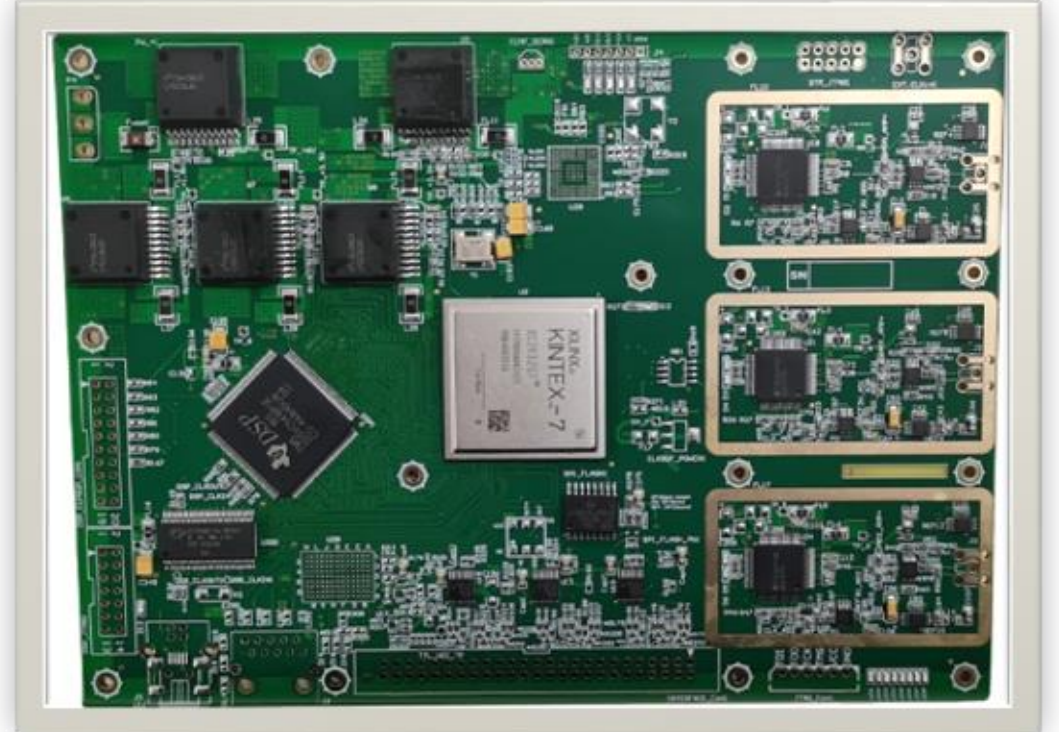
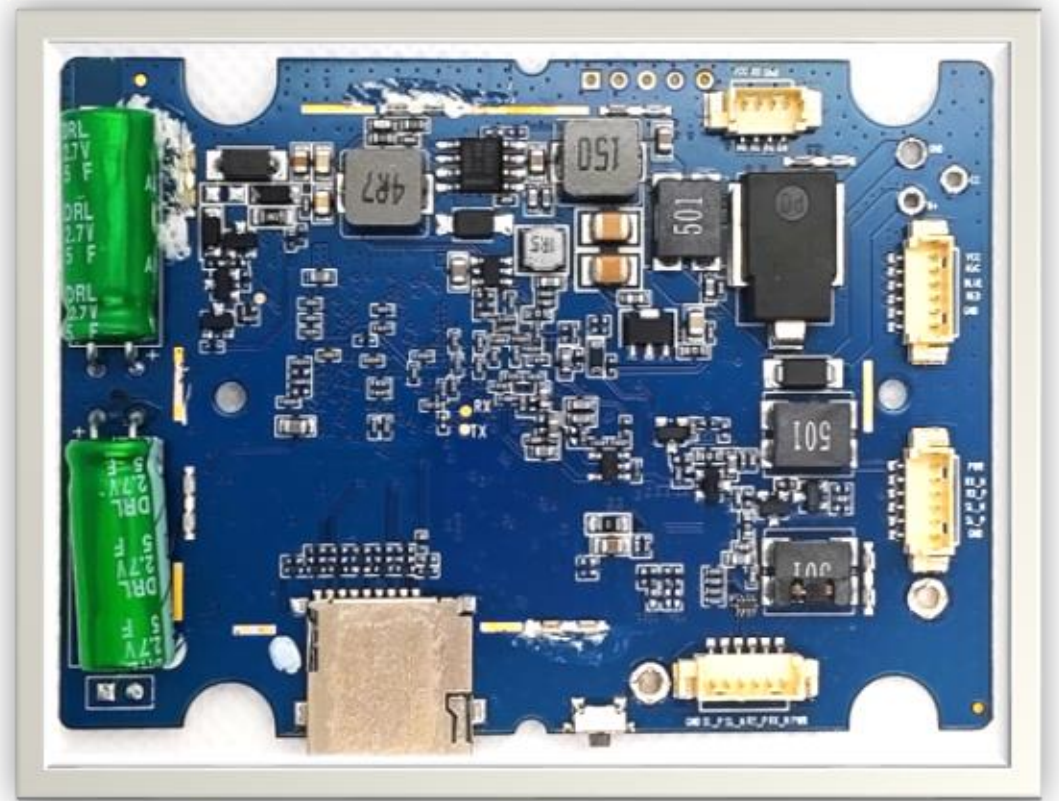


PCB Assembly Data sheet



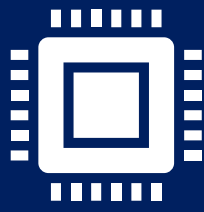
- ▶ ISO Certified Manufacturing Facilities.
- ▶ Through Hole & Surface Mount Technology Capable.
- ▶ Multiple High-Speed Japanese SMT Pick and Placer lines supporting 01005 Plus Hot Air Reflow Ovens
- ▶ Through hole Insertion & Wave Soldering. BGA Rework Capability.
- ▶ C.O.B. (Chip On Board) Capability.
- ▶ In Circuit Testers Available
- ▶ AOI (Automatic Optical Inspection).
- ▶ Experienced & Well-Trained Quality Assurance Inspectors
- ▶ Lead free RoHS lines.



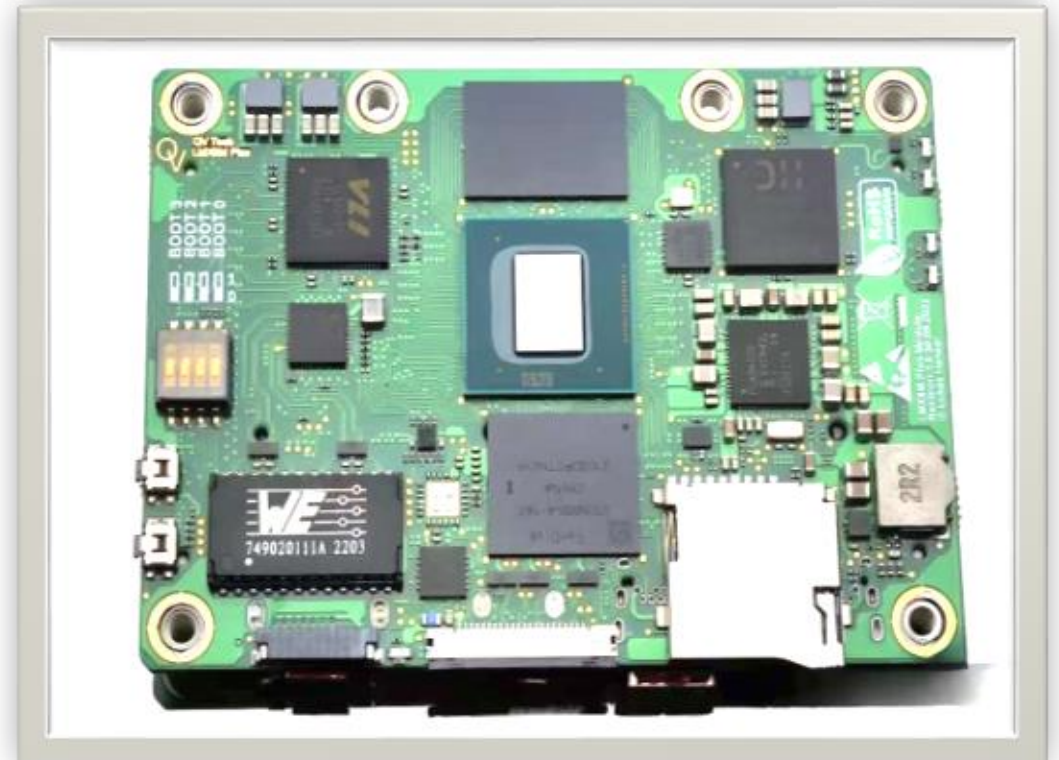
Room 401, Building C,8 Heng Zhong Rd, Chang An Town, DG

www.helptronfpc.com lee@helptronfpc.com

PCB Assembly Solutions



- ▶ SMT Assembly
- ▶ Through Hole PCB Assembly
- ▶ BGA Assembly
- ▶ PCB Prototype Assembly
- ▶ Quick Turn PCB Assembly
- ▶ Flex PCB Assembly
- ▶ Low-cost PCB Assembly
- ▶ Low-Volume PCB Assembly
- ▶ High Volume PCB Assembly
- ▶ Custom PCB Assembly
- ▶ Lead-Free PCB Assembly



Let's Talk About Your PCB Assembly Challenges

- ▶ **•No engineering involvement upfront**
Suppliers build to print without manufacturability or risk review.
- ▶ **•Unclear component sourcing**
Limited visibility into supply channels, alternates, and part authenticity.
- ▶ **•Weak prototype support**
Slow response and low priority for EVT/DVT and early-stage builds.
- ▶ **•Superficial First Article Testing**
Inspections without true functional or engineering validation.
- ▶ **•Slow handling of design changes**
rigid processes that can't keep up with evolving PCB and BOM updates.
- ▶ **•Poor shortage and EOL management**
lack of proactive sourcing strategies and qualified alternatives.
- ▶ **•Reactive quality control**
issues are found after failures, not prevented before scale-up.
- ▶ **•Unstable ramp-up to volume**
yield loss, delays, and cost surprises during production scaling.
- ▶ **•Fragmented communication**
no clear project owner coordinating engineering, sourcing, and production.
- ▶ **•Short-term delivery mindset**
success on one build, but no plan for long-term cost, supply, and revisions.

What Happen next?

- We review your project details and scope to align resources and timeline
- Clarification and feasibility check to confirm manufacturability and cost drivers
- Manufacturing assessment including lead time, capacity, and risk analysis
- You decide the next step

Free quality verification to de-risk procurement

- Free quotation to estimate cost and MOQ implications for your program
- Free DFM/DFT to identify assembly and test optimizations early
- Free PCB prototype to validate form, fit, and basic function before volume
- Free manufacturing assessment to verify supplier capability and capacity

Room 401, Building C,8 Heng Zhong Rd, Chang An Town, DG



www.helptronfpc.com



lee@helptronfpc.com